

# Estonian Forest Aid

Whence we came from and  
where are we headed?



Near history of Estonian  
conservation movements

Estonian Forest Aid's birth  
and development

Where to now?

Estonian Parliament

18.12.2018

## Near history of conservational people's movements

- In 1966, the Estonian Conservation Society was created
- In 1987 protests sparked against the phosphorite mine plans
- It became an integral part of Estonian independence movement





## Near history of conservation people's movements

- In 1988 the anti-phosphorite movement consolidated into Estonian Green Movement
- In the 90s and during the turn of the century, numerous organisations stood for the forests





## Near history of conservation people's movements

- In 2008, the movement "Save Estonia's Forests" sprung ahead for a short while
- In 2011, people's movement "For Estonia's forest" campaigned against the new development plan



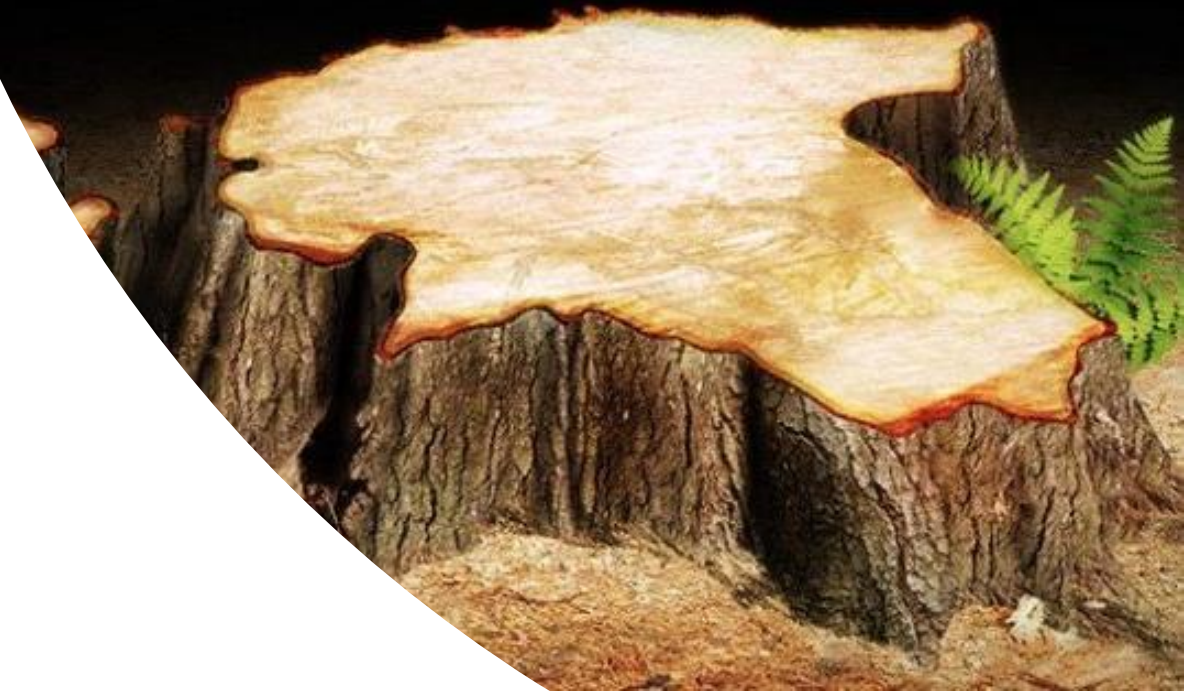


# EFA's prequel

---

- In year 2015., preparations are started for a new Forest Act amendment, whose main point of controversy is the plan to lower the cutting age of spruce
- In 2016. the environmental NGO-s start a public protest against the amendment

**Jääme metsarahvaks  
i raiume Eesti lagedak**

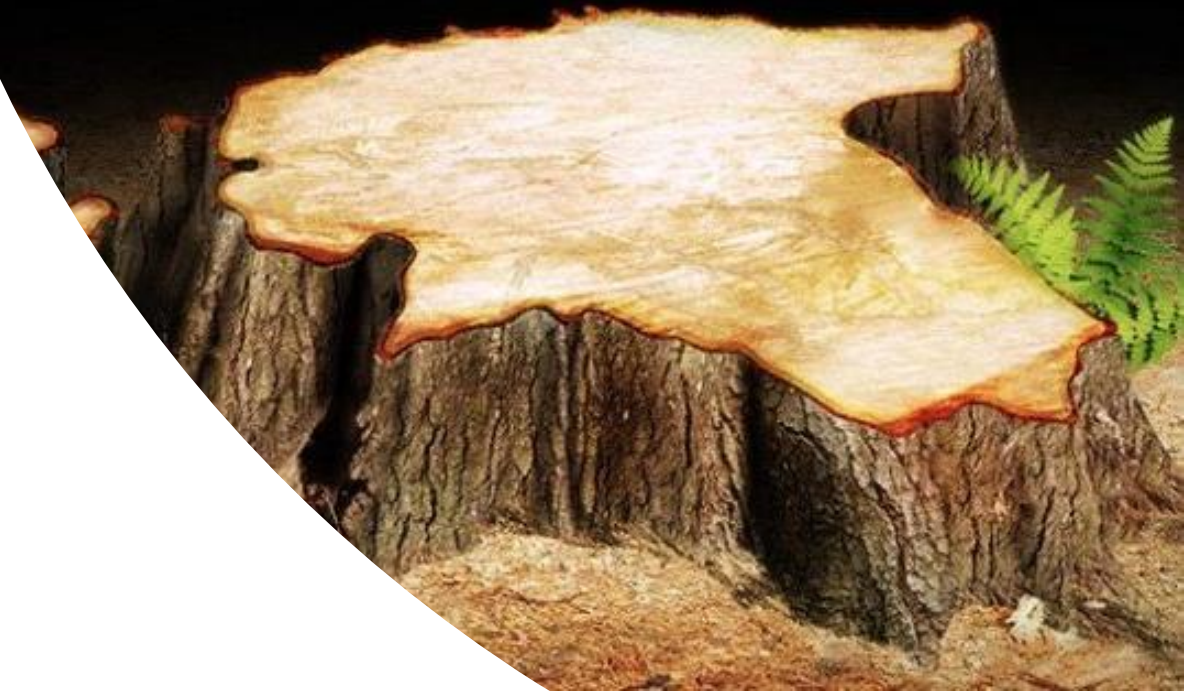


## EFA's prequel

---

- At the end of same year, people gather in front of the Ministry of Environment to protest the lowering of spruce felling age. EFA is formed.

**Jääme metsarahvaks  
i raiume Eesti lagedak**





# December 16th 2016

## EFA's first gathering

- In two weeks, over 7000 signatures have been collected against industrial forestry policy
- In front of the Ministry of Environment, the citizen's initiative Estonian Forest Aid, a.k.a EFA (in Estonian, also doubles as the Mother Movement) is formed



# December 16th 2016 EFA's first gathering

- At the same time, due to public pressure, new negotiations are held within the Ministry over the Forest Act amendment







From in front of the  
Ministry the procession  
moves to the Parliament's  
front door



A woman with blonde hair, wearing a grey knit beanie and a blue and green patterned scarf, is speaking into a microphone. She is pointing her right index finger upwards. In the background, other people are visible, including a man in a brown hat and another person in a grey beanie. The scene appears to be outdoors, possibly at a protest or public gathering.

A few days later, EFA's forum is created on social media. People start moving together to protect the forest



March 23rd 2017

## At the gate of Nursipalu

- Creation of the Keretü nature preserve has been years in waiting
- EFA starts supporting the local community





# March 23rd 2017

## At the gate of Nursipalu

- On March 23rd, EFA's activists welcome the arriving Committee of National Defence at the gate of Nursipalu polygon to express their disapproval of a development harmful to forest biota







## May 1st 2017 **EFA hikes to Vorbuse**

- EFa has already informed the state's representatives, municipalities and the public of the dangers of the Est-For pulp mill



# In Vorbuse

- This was the first likely place brought out in public sphere as a possible location for the giant pulp mill
- The hike was also covered by Canal 2 and TV3 news







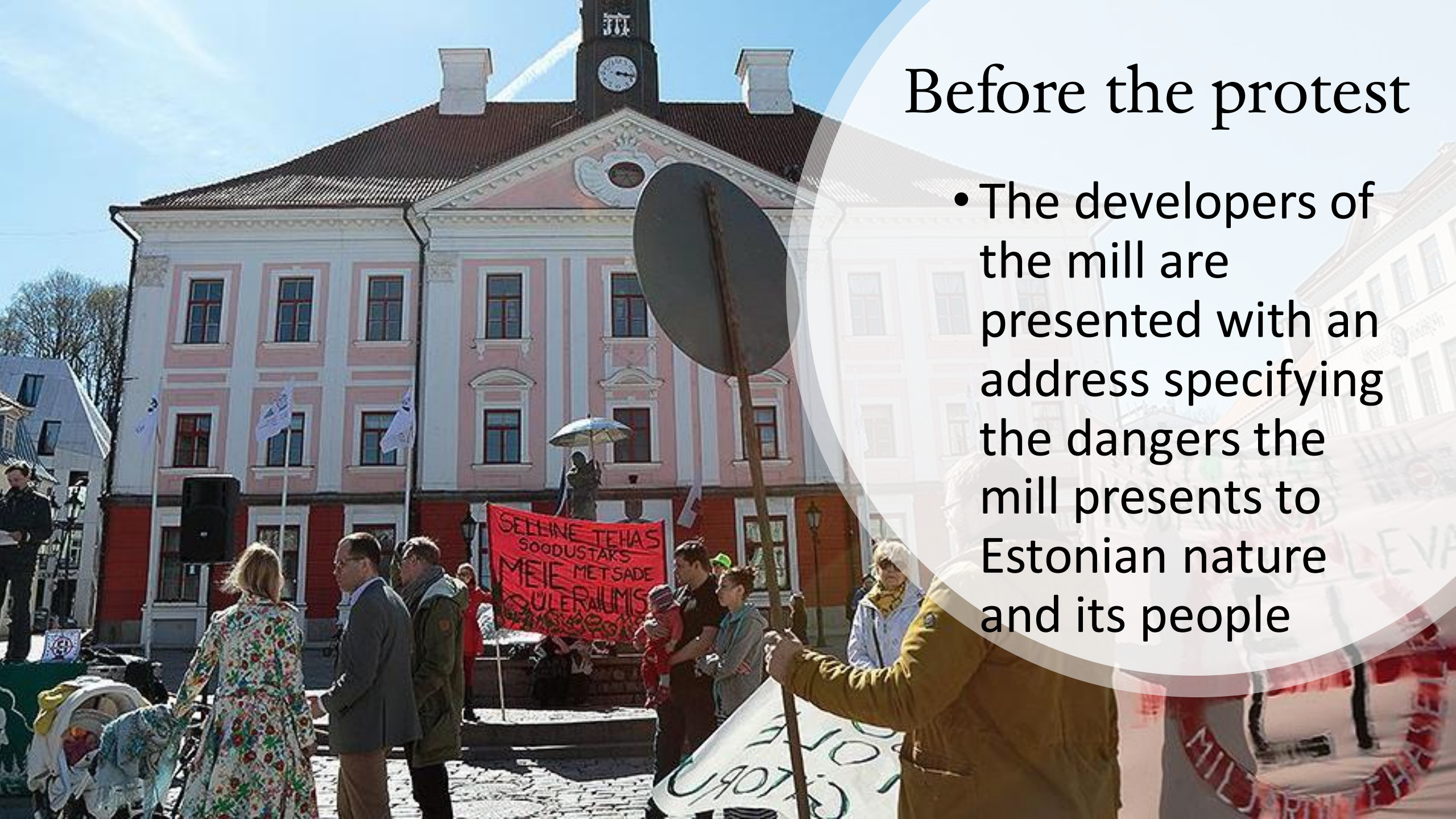
# May 13th 2017 EFA protests in Tartu

EMAJÕGI  
EI OLE  
SOLGITORU



# Before the protest

- The developers of the mill are presented with an address specifying the dangers the mill presents to Estonian nature and its people







Saturday morning, over 150 people gathers to the demonstration on the town hall square



# Politicians and intellectuals perform with speeches

- Among the performers, there were the Mayor of tartu, Urmas Klaas and various poets, writers and scientists

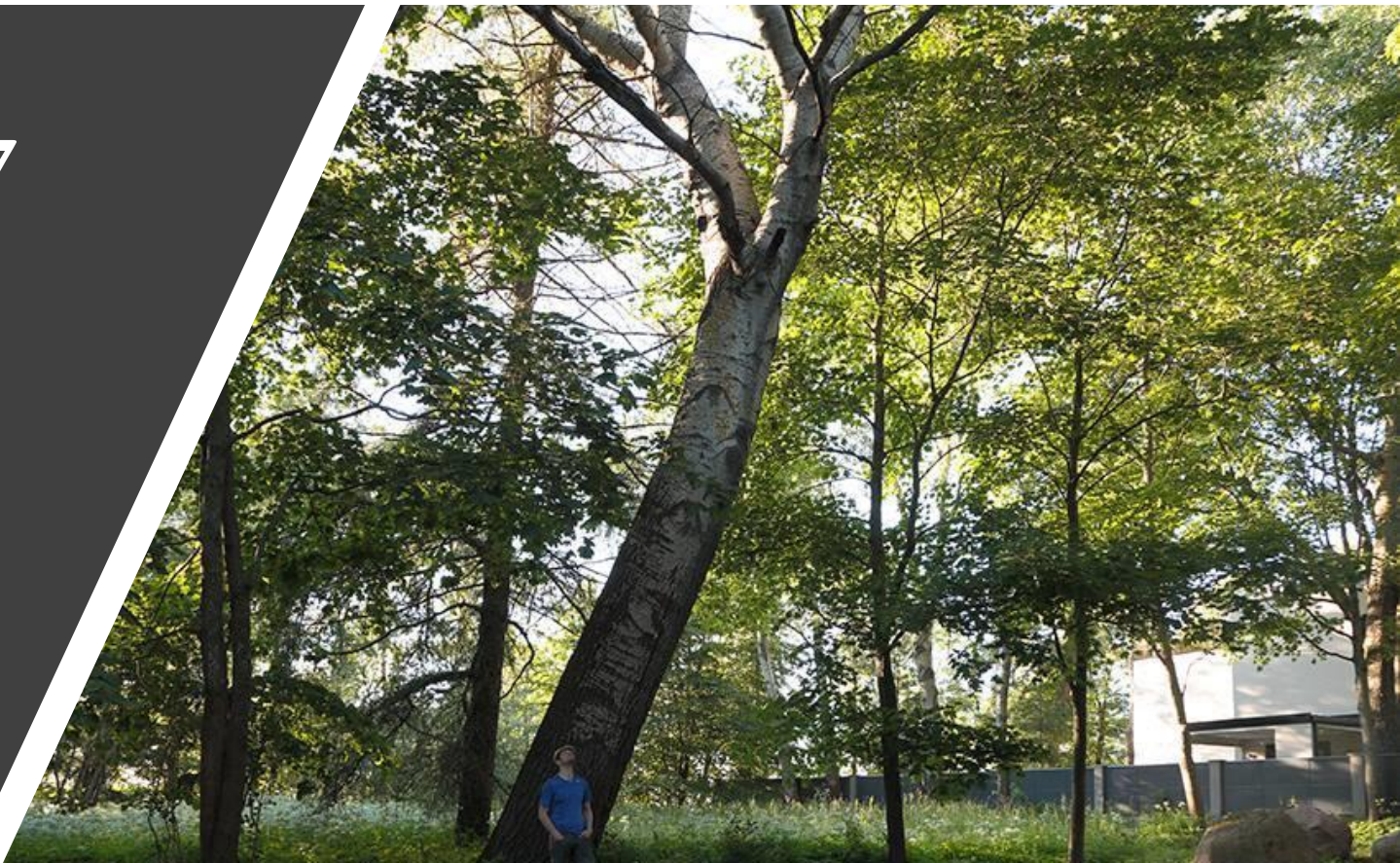






# Summer / 2017

- Cleaning up Stroomi forest
- Protecting the parks of Tallinn





The image is a composite of two photographs. The left photograph shows a public meeting in progress, with several people seated on a wooden bench in a room with white walls and framed artwork. The right photograph is a satellite map of the Harkujärve area, overlaid with a semi-transparent map interface. The map shows land parcels outlined in yellow, with a large area outlined in red. Various parcel numbers are visible, such as 19801:002:0929, 19801:002:1126, 19801:002:1143, 19801:002:1151, 19801:002:1149, 19801:002:1156, 19801:002:1159, 19814:001:0533, 19814:001:0524, 19814:001:0527, 19814:001:0521, 19814:001:0535, 19814:001:0536, 19814:001:0526, 19814:001:0516, 19814:001:0525, 19814:001:0015, 19814:001:0392, 19814:001:0830, 19814:001:020, 19814:001:0242, 19814:001:0599, 19814:001:0502, 19814:001:0022, 19814:001:0243, 19814:001:0024, 19814:001:03014, 19814:001:0638, 19814:001:03013, 19814:001:0393, 19814:001:022, 19814:001:0230, 19814:001:0533, 19814:001:0524, 19814:001:0527, 19814:001:0521, 19814:001:0535, 19814:001:0536, 19814:001:0526, 19814:001:0516, 19814:001:0525, 19814:001:0015, 19814:001:0392, 19814:001:0830, 19814:001:020, 19814:001:0242, 19814:001:0599, 19814:001:0502, 19814:001:0022, 19814:001:0243, 19814:001:0024, 19814:001:03014, 19814:001:0638, 19814:001:03013, 19814:001:0393, 19814:001:022, 19814:001:0230, 19814:001:0533, 19814:001:0524, 19814:001:0527, 19814:001:0521, 19814:001:0535, 19814:001:0536, 19814:001:0526, 19814:001:0516, 19814:001:0525, 19814:001:0015, 19814:001:0392, 19814:001:0830, 19814:001:020, 19814:001:0242, 19814:001:0599, 19814:001:0502, 19814:001:0022, 19814:001:0243, 19814:001:0024, 19814:001:03014, 19814:001:0638, 19814:001:03013, 19814:001:0393, 19814:001:022, 19814:001:0230, 19814:001:0533, 19814:001:0524, 19814:001:0527, 19814:001:0521, 19814:001:0535, 19814:001:0536, 19814:001:0526, 19814:001:0516, 19814:001:0525, 19814:001:0015, 19814:001:0392, 19814:001:0830, 19814:001:020, 19814:001:0242, 19814:001:0599, 19814:001:0502, 19814:001:0022, 19814:001:0243, 19814:001:0024, 19814:001:03014, 19814:001:0638, 19814:001:03013, 19814:001:0393, 19814:001:022, 19814:001:0230, 19814:001:0533, 19814:001:0524, 19814:001:0527, 19814:001:0521, 19814:001:0535, 19814:001:0536, 19814:001:0526, 19814:001:0516, 19814:001:0525, 19814:001:0015, 19814:001:0392, 19814:001:0830, 19814:001:020, 19814:001:0242, 19814:001:0599, 19814:001:0502, 19814:001:0022, 19814:001:0243, 19814:001:0024, 19814:001:03014, 19814:001:0638, 19814:001:03013, 19814:001:0393, 19814:001:022, 19814:001:0230, 19814:001:0533, 19814:001:0524, 19814:001:0527, 19814:001:0521, 19814:001:0535, 19814:001:0536, 19814:001:0526, 19814:001:0516, 19814:001:0525, 19814:001:0015, 19814:001:0392, 19814:001:0830, 19814:001:020, 19814:001:0242, 19814:001:0599, 19814:001:0502, 19814:001:0022, 19814:001:0243, 19814:001:0024, 19814:001:03014, 19814:001:0638, 19814:001:03013, 19814:001:0393, 19814:001:022, 19814:001:0230, 19814:001:0533, 19814:001:0524, 19814:001:0527, 19814:001:0521, 19814:001:0535, 19814:001:0536, 19814:001:0526, 19814:001:0516, 19814:001:0525, 19814:001:0015, 19814:001:0392, 19814:001:0830, 19814:001:020, 19814:001:0242, 19814:001:0599, 19814:001:0502, 19814:001:0022, 19814:001:0243, 19814:001:0024, 19814:001:03014, 19814:001:0638, 19814:001:03013, 19814:001:0393, 19814:001:022, 19814:001:0230, 19814:001:0533, 19814:001:0524, 19814:001:0527, 19814:001:0521, 19814:001:0535, 19814:001:0536, 19814:001:0526, 19814:001:0516, 19814:001:0525, 19814:001:0015, 19814:001:0392, 19814:001:0830, 19814:001:020, 19814:001:0242, 19814:001:0599, 19814:001:0502, 19814:001:0022, 19814:001:0243, 19814:001:0024, 19814:001:03014, 19814:001:0638, 19814:001:03013, 19814:001:0393, 19814:001:022, 19814:001:0230, 19814:001:0533, 19814:001:0524, 19814:001:0527, 19814:001:0521, 19814:001:0535, 19814:001:0536, 19814:001:0526, 19814:001:0516, 19814:001:0525, 19814:001:0015, 19814:001:0392, 19814:001:0830, 19814:001:020, 19814:001:0242, 19814:001:0599, 19814:001:0502, 19814:001:0022, 19814:001:0243, 19814:001:0024, 19814:001:03014, 19814:001:0638, 19814:001:03013, 19814:001:0393, 19814:001:022, 19814:001:0230, 19814:001:0533, 19814:001:0524, 19814:001:0527, 19814:001:0521, 19814:001:0535, 19814:001:0536, 19814:001:0526, 19814:001:

- In June 2017., EFA is contacted by citizens of Harku that have accidentally learned of the plans to log the forests next to the lake



# Saving the forests of lake Harku

- June 29th, EFA sends the Environmental Board an address contesting the logging permits for forests on the shore of lake Harku





# Saving the forests of lake Harku

- We direct attention that according to the general planning the forests on the western shore of lake Harku have to be kept intact





# Saving the forests of lake Harku

- The municipality joins the address
- There's a meeting with the Environmental Board
- The Board recalls the logging permits
- Forests of Harku are standing to this day





# Inspecting the logging in Velise

- After the address of the initiative some of the infringements were identified and a misdeed procedure was opened regarding the perpetrator





# Protecting the nature of Velise



- The Velise river, on whose shore excessive logging had taken place, is situated next to a Natura 2000 preserve and hosts several protected species



# Protecting the nature of Velise

- EFA proposes the Environmental Board to enhance the protection conditions of the Velise river Special Area for Conservation, but as of yet, it hasn't moved further from the level of thought





Fall 2017.:

## EFA goes to court against Est-For

- Estonian Forest Aid pursues the annulment of the nationally designated spatial plan at the Administrative Court of Tallinn





Fall 2017:  
EFA goes to  
court against Est-For

- The Administrative Court rejects EFA-s complaint. The Circuit Court and the Supreme Court do likewise as EFA attempts to appeal





# October 25th 2017 EFA at the Parliament

- The conference is borne in cooperation with University of Tartu, Estonian Fund for Nature and the Environment Committee of the Parliament





# October 25th 2017

## EFA at the Parliament

- Presentations are given by University of Tartu researchers Anneli Palo and Asko Lõhmus, the Estonian Fund for Nature's chairman Tarmo Tüür, nature tourism entrepreneur Marika Mann et al

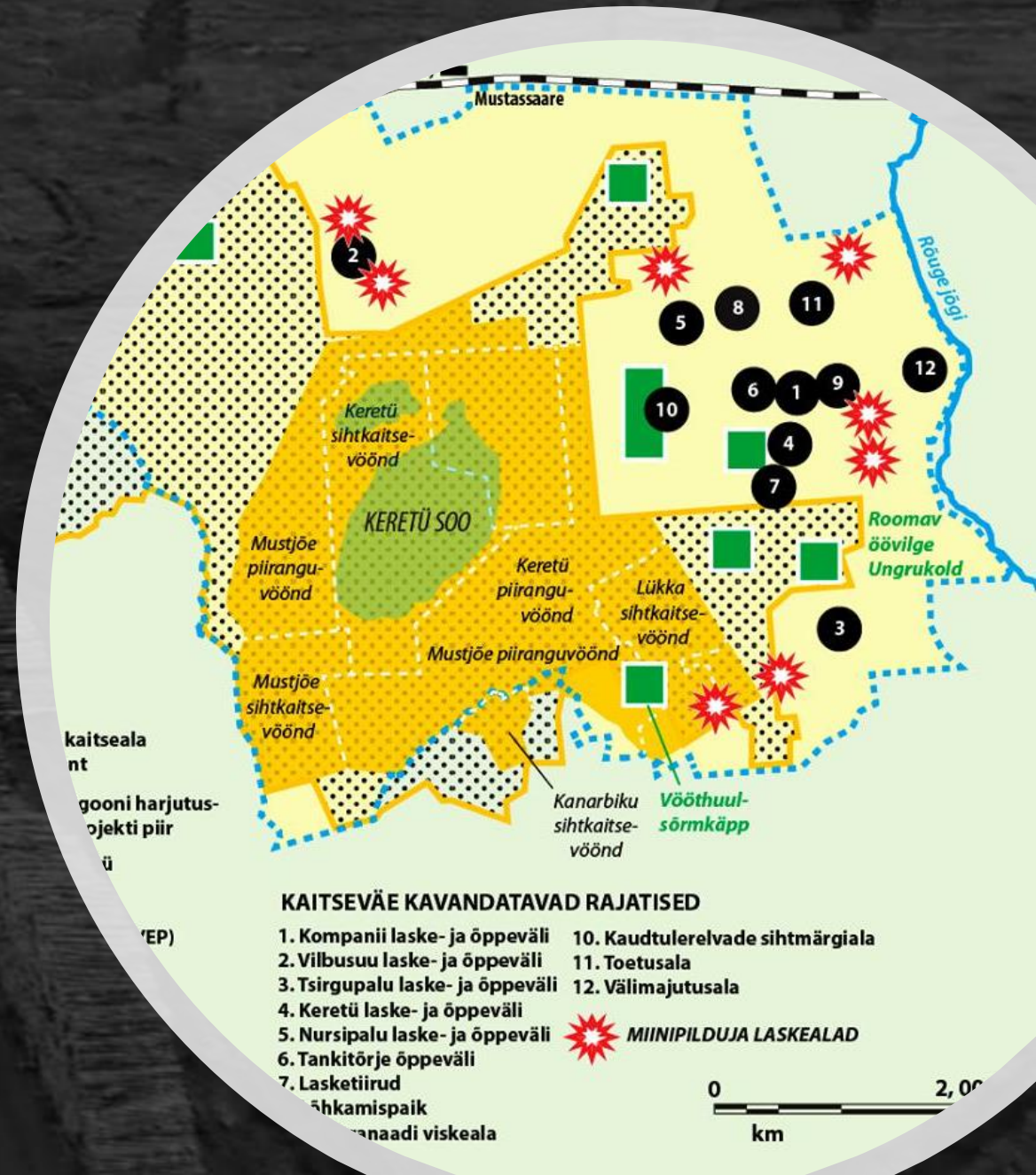




# November 6th 2017

## EFA goes to court over logging at Nursipalu

- Keretü suffers a hasty logging and conversion of almost 95 hectares of old-growth forest
- EFA sues the Environmental Board over issuing the conversion permit, first at the Administrative court, later at the Circuit Court, which accepts the appeal
- Due to legal nuances, the court process reaches a dead end after a year of waiting





# December 15th 2017 Mind-expanding demo

- There's a gathering in front of the Ministry of Environment and the Ministry receives the People's Hope award
- The musicians Tõnis Mägi and Jaak Johanson perform in support of the forest







A procession moves to the door of the  
Parliament





- Songs are performed by Jaak Tuksam, Indrek Tammoja, Triinu Taul and others
- Minds are being expanded with singing and dancing in Pärnu as well

Speeches are given by Marek Strandberg, Mihkel Kangur, Kristjan Piirimäe and others



# Year 2018. gets a dashing start

- EFA becomes a member of the Estonian FSC-s social chamber
- FSC certificate is an international standard, whose possession is extremely important for participating in today's wood markets



# Year 2018. gets a dashing start

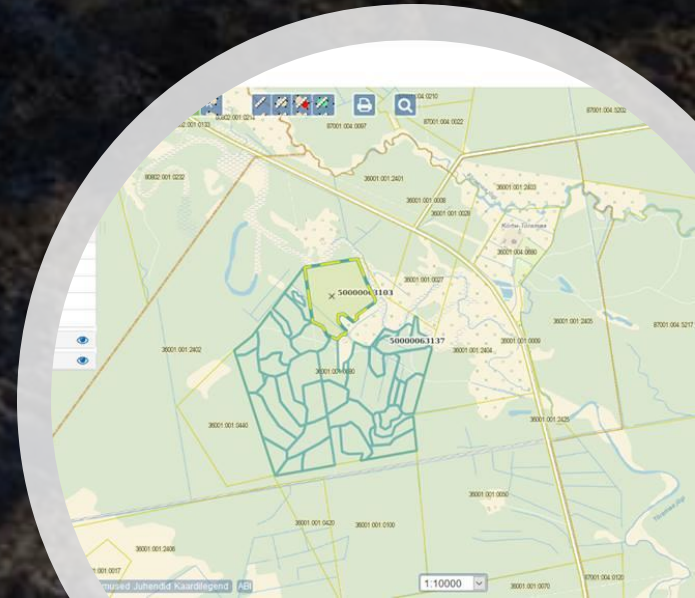
- In collaboration with the FSC, EFA has issued adjustments to the new local forestry standard and made two audits to the state forest manager, identifying numerous violations of the standard



# March 2018

## EFA stops logging at Soomaa Nat Park

- Our contact at Soomaa helps reveal a grand forest fraud at the very heart of the national park
- It is a complicated scheme, for confirming it's illegality EFA compiles a thorough analysis to the Environmental Board

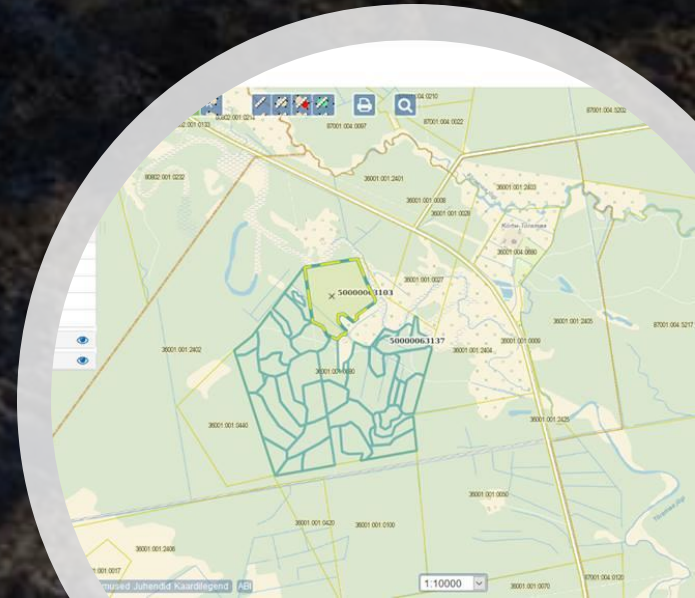




# March 2018

## EFA stops logging at Soomaa Nat Park

- Though some of the accusations are processed as misdeeds, most remain uninvestigated due to alleged unprovability
- A doubt arises that the discovered scheme may be widespread for logging protected areas





## Forestry Development Plan 2030, EFA's inclusion

- Already a year before the start of the FDP2030 process, EFA starts mapping the forestry problems on its own
- In March 2018, Estonian Forest Aid is included in the process, but has to strain itself from the start to ensure equal representation





# Metsanduse arengukava 2030 EMA kaasamine

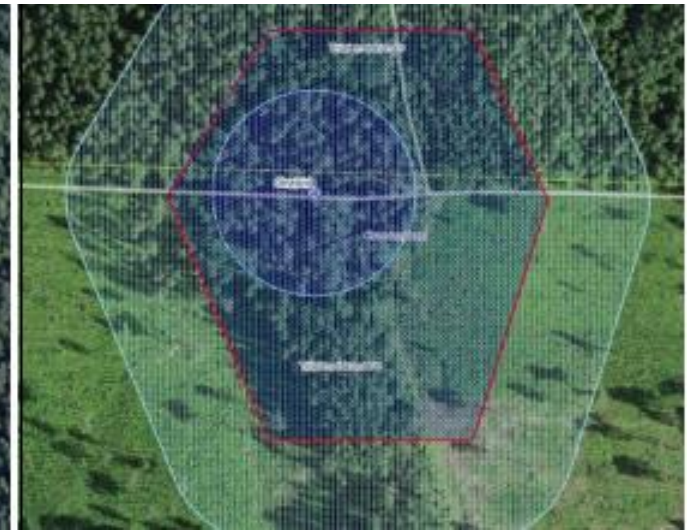
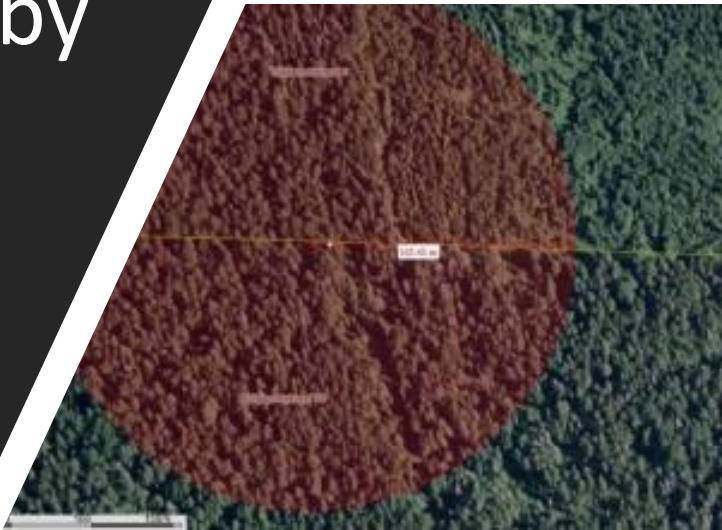
- Pettumust tekitab tööühmade lindistuste salastamine ja kiire hävitamine, arutelude tasakaalustamatus ning üldiste tööreeglite ähmasus
- EMA suudab suurema osa kaardistatud probleemidest läbi suruda, ent jääb arusaamatuks, kuidas seda materjali hiljem kasutama hakatakse





# EFA informs of logging sacred sites

- On March 20th EFA publishes an overview of dozens of logged or despoiled sacred sites by natural sacred sites expert Ahto Kaasik







- Together with the House of Groves and the House of Taara and Native Religions, EFA meets the Minister of Culture and hands him an address requesting speedy action on saving the sacred sites



- EFA continues cooperation with the House of Groves, House of Taara and Native Religions and the Estonian FSC to protect the sacred sites and share information about them

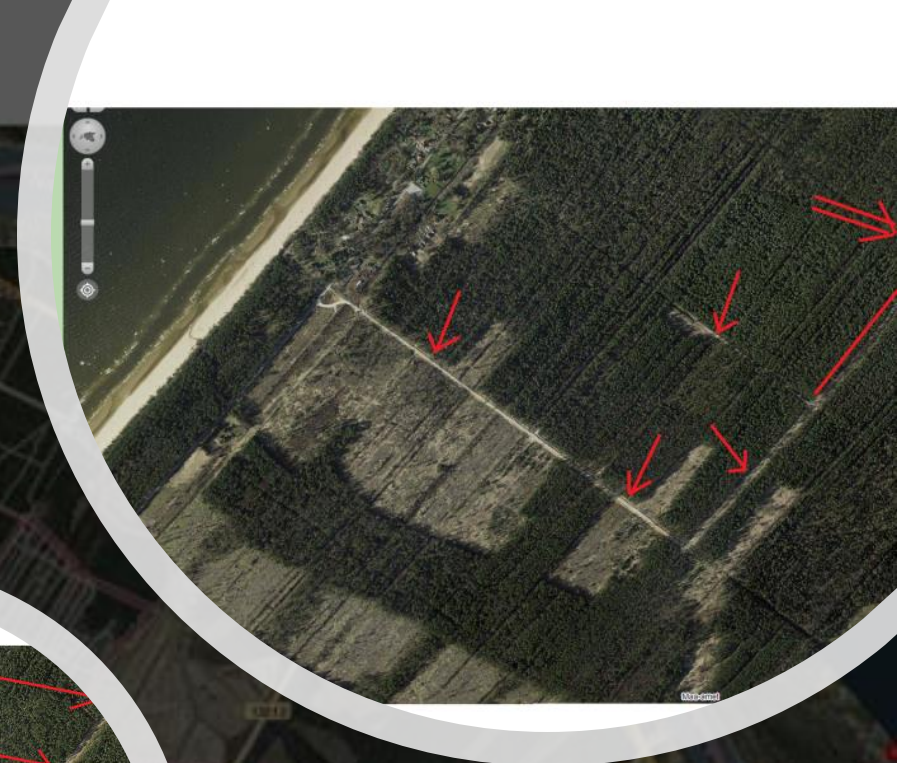




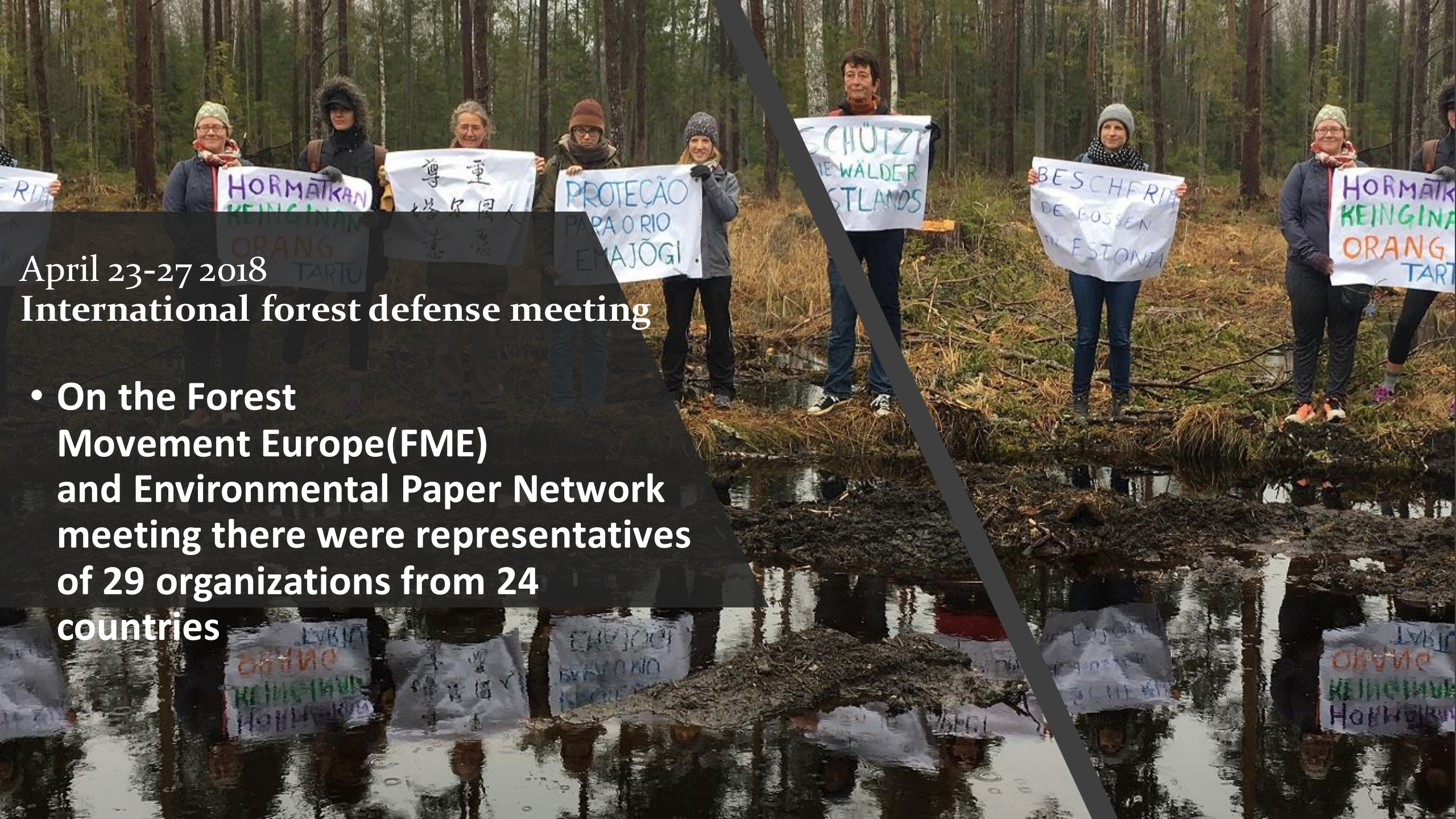
# April 2018

## Forests of Narva-Jõesuu

- Locals contact EFA over widespread logging
- EFA addresses the state and the municipalities in support of the locals
- The SFMC has said it will leave the forests of Narva-Jõesuu alone for a few years
- There's an open process for constituting a landscape preserve



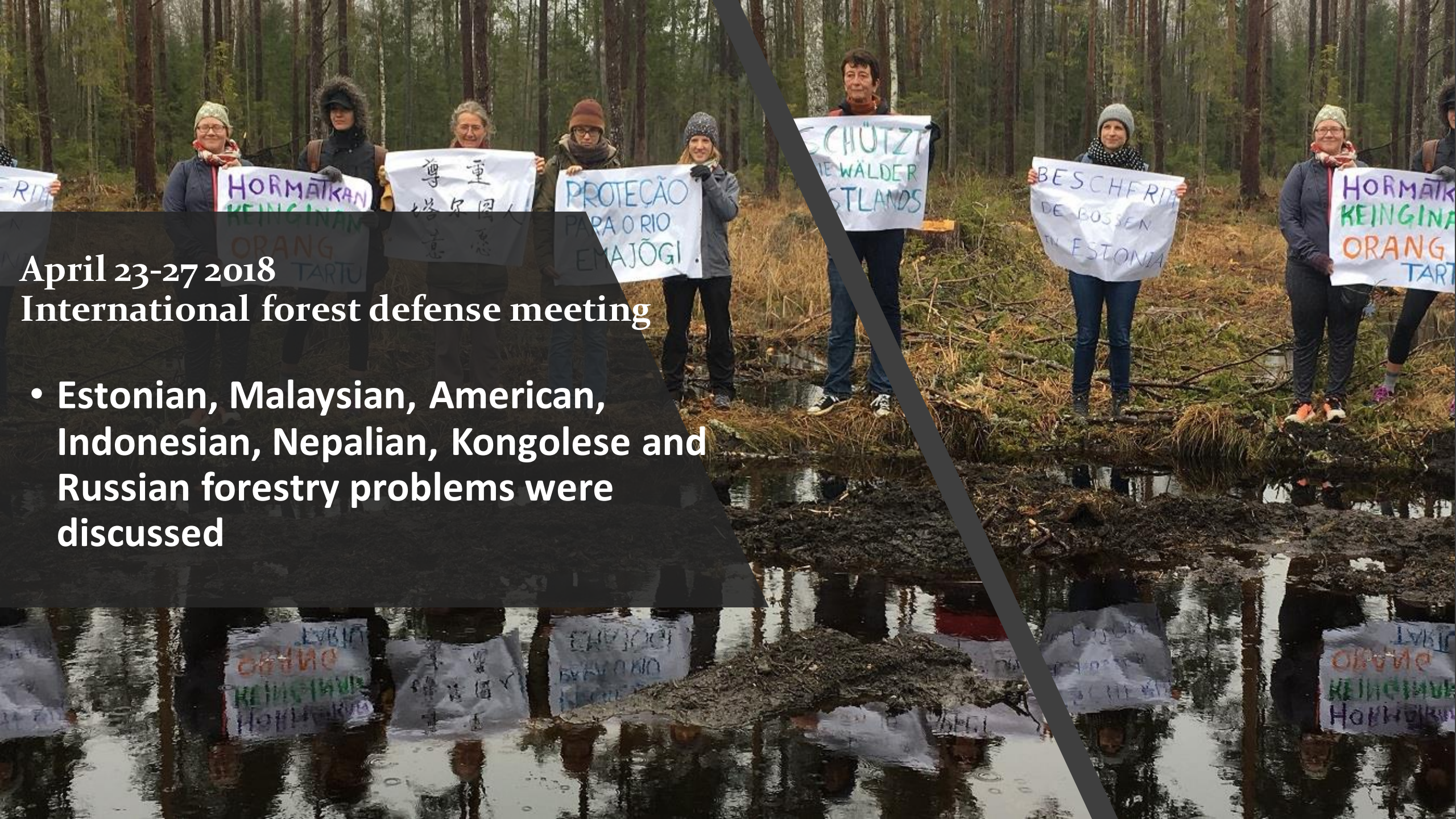




April 23-27 2018  
International forest defense meeting

- On the Forest Movement Europe(FME) and Environmental Paper Network meeting there were representatives of 29 organizations from 24 countries





April 23-27 2018

International forest defense meeting

- Estonian, Malaysian, American, Indonesian, Nepalian, Kongolese and Russian forestry problems were discussed





April 23-27 2018

International forest defense meeting

- EFA was helped in organising the event by the Estonian Fund for Nature and the nature tourism firm Estonian Nature Tours



# EFA's art contest

- EFA's art contest "The value of forest" received over 200 works from school youngsters from all over Estonia







# EFA's art contest

- The purpose of the contest was to inspire the youth to think of the condition of Estonian forests and express their ideas through artistic means



# EFA's art contest

- The exhibition of the works has been presented at the Tallinn Zoo, Tartu House of Nature and elsewhere in Estonia







May 2018  
**Saving Lohusalu forests**

- EFA contested the land conversion plans related to the parking lot building plan the locals opposed





## **May 2018**

# **Saving Lohusalu forests**

- Thanks to the work of the Lohusalu Peninsula Nature Society we reached a compromise with the municipality, which saved a large amount of the forests that were to be deforested



# June 30th 2018 Forest song festival

- On Hüpasaare swamp island, EFA holds a runic song festival, also marking the 25th birthday of Soomaa National Park





September 5th 2018

## Anti-clearcut campaign begins

- The head of the Finnish Nature League, Harri Hölttä and other leaders of the Finnish anti-clearcut campaign meet the EFA-s activists at the Tallinn Creative Hub
- During the campaign, people are informed of the dangers and scope of Estonian clearcut logging and signatures are collected to a petition that requests significant restrictions to clear cut and a better protection for the values of forest



**LAGERAIED**  
**AJALUKKU**





A photograph of a person in a plaid shirt standing in a forest next to a blue pickup truck parked on a dirt road. The person is standing in the foreground, and the truck is parked on a dirt road in the background. The forest is dense with trees, and the ground is covered in fallen leaves and branches.

# 2018 / late autumn EFA checks on logging activity in the national parks

- On October 27th the EFA organises an operation called "The rut of Lahemaa" at the Lahemaa Nat Park, controlling the lawfulness of current logging operations
- Although less than 5% of the active forest notifications can be checked, the Environmental Inspectorate is presented with three possible violations, of which 2 have now been confirmed by the EI.



A photograph of a man in a plaid shirt and jeans standing next to a large pile of dirt. In the background, a blue pickup truck is parked on a dirt road, and a forest of tall trees is visible. The image has a dark, semi-transparent overlay with white text.

2018 / late autumn

# EFA checks on logging activity in the **national parks**

- Taking after the "successful" operation the EFA plans to inspect other national parks come next year, and to improve our cooperation with the environmental supervision offices





# On the doorsill of year 2019 **What next?**

- EFA aims to continue participating in the FDP 2030 process to move towards the reduction of logging volumes and a better defense of the ecosystems



A photograph of a parent bird, likely a warbler, with a brown and white speckled pattern, perched on a branch and feeding its young. The nest is built in a tree cavity, and several young birds are visible, some with their mouths open, waiting for food. The background is a blurred forest scene.

# On the doorsill of year 2019 What next?

- After the pulp mill struggle more attention can be given to the industry's growing needs for unsustainable biomass and the problems that entails





# On the doorsill of year 2019 What next?

- Cooperation will be continued with both our international and local partners and the FSC



A photograph of a parent bird, likely a thrush, feeding its young in a nest. The parent bird is perched on a branch, facing right, with its beak open. Several young birds are gathered around it, also with their beaks open, waiting for food. The nest is built in a hollowed-out section of a tree trunk, lined with moss and twigs. The background is a blurred forest scene.

# On the doorsill of year 2019 What next?

- We will develop cooperation with the structures of environmental supervision and we'll try to facilitate dialogue between opposing interest groups



A photograph of a parent bird, likely a thrush, with a speckled brown and white pattern, perched on a branch and feeding its young. Several young birds are visible in the nest, some with their beaks open, waiting for food. The nest is built in a hollowed-out section of a tree trunk, surrounded by moss and twigs. The background is a soft-focus green forest.

# On the doorsill of year 2019 **What next?**

- We'll continue spreading the information on sustainable forestry and educating the forest owners on the alternatives to clear cut economy



A photograph of a parent bird, likely a sparrow or similar small bird, perched on a branch and feeding its young. The parent bird has a brown and white speckled pattern on its chest and a blue beak. It is surrounded by several young birds, which are also speckled and have yellow beaks. They are in a nest made of twigs and moss, with a tree trunk in the background.

# On the doorsill of year 2019 What next?

- We continue investinaging the environment worries of people that turn to us and helping them achieve justice, if need be.





# On the doorsill of year 2019 **What next?**

---

- We'll encourage people to form local organisations and non-profits for better participation in shaping the local environment policy





# On the doorsill of year 2019 What next?

- We'll consult local associations and work towards a communications network between the citizens' unions



A photograph of a parent bird, likely a thrush, with a speckled brown and white pattern, perched on a branch and feeding its young. Several young birds are visible in the nest, some with their beaks open, waiting for food. The nest is built in a hollowed-out section of a tree trunk, surrounded by moss and lichen. The background is a soft-focus green, suggesting a forest setting.

# On the doorsill of year 2019 **What next?**

- We will do everything so that our forest and general life environment would become healthier, wholesomer, more diverse and would offer people joy and improvement instead of political quarrels.





Strength be with us all!

For the aid of Estonia  
and the entire world!